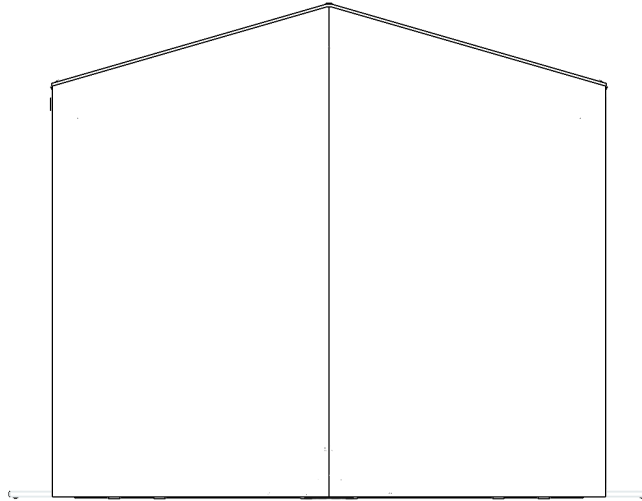


# SIDELINER AIR SETUP AND TAKEDOWN



## 1. SCOPE

- 1.1. To provide instruction for set up and takedown of SidelinER AIR.

## 2. REQUIRED COMPONENTS

- 2.1. SidelinER AIR frame
- 2.2. SidelinER AIR cover
- 2.3. Travel duffel
- 2.4. Branding (optional)
- 2.5. Travel Case (optional)



Figure 2 Required Components

### 3. SIGNIFICANE AND USE

- 3.1. Remove the SidelinER AIR frame and cover from their shipping container and remove the protective foam pieces.
- 3.2. Layout the cover in a circle. Make note of what end the doors are on.



Figure 3.2 Layout the Cover

- 3.3. Place the frame upright in the center of the cover. The sides should be about three feet apart.



Figure 3.3 Place the Frame

- 3.4. Position the cover over the bottom frame members.
- 3.5. With the left and right sides approximately three feet apart, feed the cover snap straps over the vertical tubes, between the truss system tubes, and snap it in place.



Figure 3.5 Attach the Cover Peaks

- 3.6. Repeat Step 3.5 for the four corners.



Figure 3.6 Attach the Cover Corners

- 3.7. Move inside and locate the center support. Push up on the bottom hinge until the truss system clicks into place. Make sure both the left and right sides are locked.



Figure 3.7 Expand the Frame

- 3.8. Repeat Step 3.7 for the supports over the doors.
- 3.9. Go around the inside of the cover and fasten all the one-wrap Velcro sections around the cover straps. The cover straps should be positioned over the top of each tube and the one-wrap should be secured tightly around them to keep them in place.



Figure 3.9 Fasten the One-Wrap

- 3.10. Move to the bottom of the cover and secure the eight one-wrap Velcro sections around the frame. The outermost four sections must be fed through the footman loops.



Figure 0 Secure the Bottom

## 4. BRANDING ATTACHMENT

- 4.1. Remove the branded panel from its shipping container.
- 4.2. Attach the branded panel to your SidelinER starting with a top corner. With the branding attached to a corner and the remaining material in hand, walk to the opposite side of the panel attachment location and secure the other corner. Pull the panel tight and allow it to lay on top of the Velcro attachment points.
- 4.3. Next, work the panel attachment down the vertical strips. Finally, secure the bottom section of the panel. Please note, the panel may need minor adjustments to ensure proper fitment.



Figure 4 Attach the Branding

## 5. TAKEDOWN

- 5.1. Unlock the hubs at the bottom (2) and the truss sections at the top (6).
- 5.2. Lay the unit down and bring the two sides together. Secure the unit with the strap attached to the cover.
- 5.3. Place SidelinER in a Kinematic approved travel case or duffel.

- 5.3.1. SidelinER covers should never be stored wet for extended periods of time. If takedown occurs during or shortly after a period of rain, SidelinER should be set up at the first available opportunity and allowed to dry to prevent mildew.
- 5.3.2. Branding should be removed from the cover and folded separately if the cover is being stored for an extended period.
- 5.4. The cover may remain attached and stowed on the frame for transport. However, special care must be given to ensure the cover does not get caught between the truss system and frame tubes. This may result in the fabric getting torn. There are several moving parts to the frame and they are obstructed from view by the cover when left attached. As a result, unintentional damage may also occur to the frame. Damage resulting from improper takedown is not covered under Kinematic Limited Warranty Program. Additional Customer Service support is available online at [www.kinematiccompany.com/quoteform](http://www.kinematiccompany.com/quoteform).