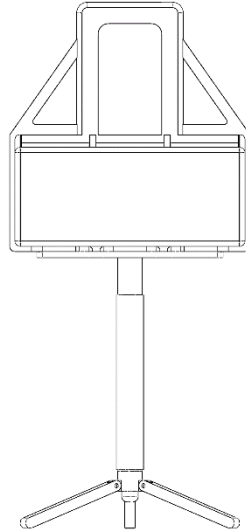


# KICKSTAND INSTALLATION



## 1. SCOPE

- 1.1. To provide instruction for installing a Kickstand on a squeeze bottle caddy.

## 2. REQUIRED COMPONENTS

- 2.1. Kickstand Coupling Plate Set
- 2.2. Monopod
- 2.3. Monopod Base
- 2.4. Squeeze Bottle Caddy
- 2.5. 1/8" Allen wrench
- 2.6. Hardware Packet

## 3. SETUP

- 3.1. Place one of the coupling plates on a hard, level surface. This will be referred to as the bottom plate later in the setup procedures.
- 3.2. Insert one of the larger hex nuts into the center cutout.
  - 3.2.1. The thinner nut should be used on caddies where the center rib is flush with the caddy's feet.
  - 3.2.2. The thicker nut should be used on caddies where the center rib is recessed above the caddy's feet.

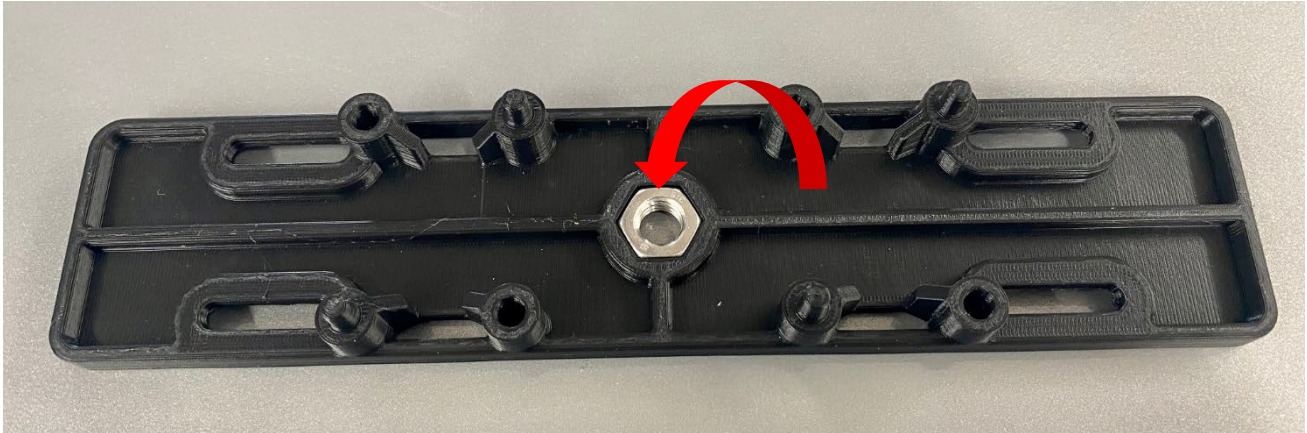


Figure 3.2 Positioning the Hex Nut

3.3. Place the caddy down onto the coupling plate.



Figure 3.3 Positioning the Bottom Plate

3.4. Insert the second coupling plate through the top of the caddy and snap it down onto the bottom coupling plate. This will be referred to as the top coupling plate later in the setup procedures.

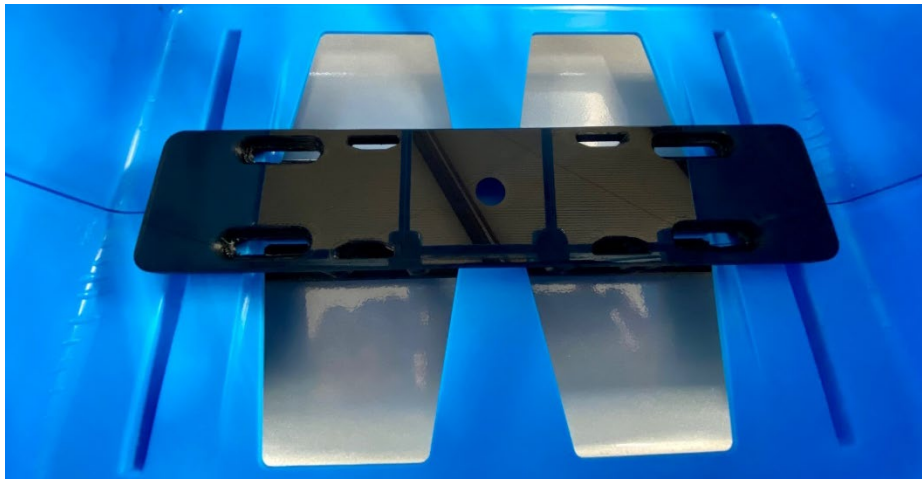


Figure 3.4 Positioning the Top Plate

- 3.5. Lay the caddy on its side.
- 3.6. Insert a screw into each of the four slots in the bottom plate. Install a locknut onto each screw and finger tighten.
- 3.7. Once all four screws and locknuts are installed finger tight, position the coupling plate set in the center of the caddy.
- 3.8. Slide the screws outward until they contact the edge of the cutouts in the caddy. Use an 1/8" Allen wrench to tighten the screws until the coupling plate set is sufficiently clamped in place on the caddy.

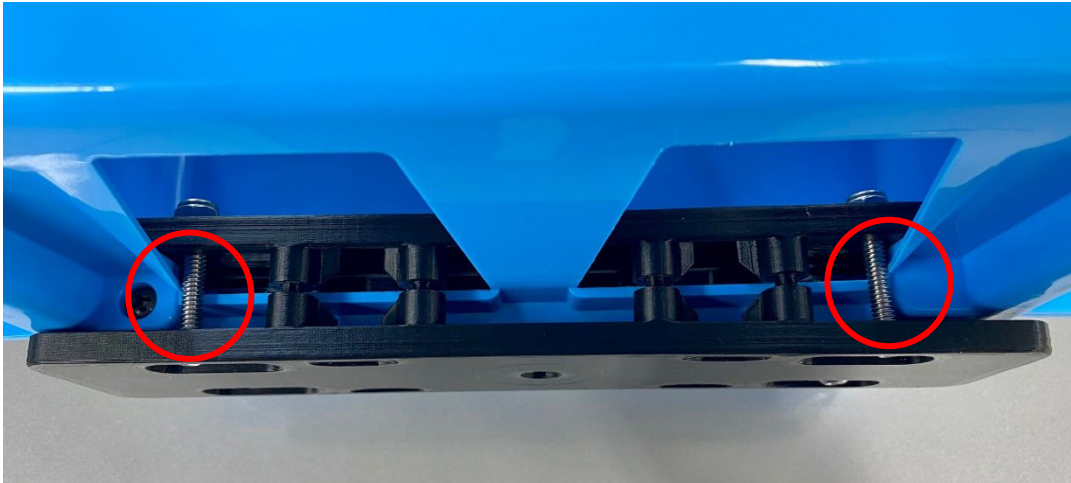


Figure 3.8 Securing the Coupling Plates

- 3.9. Install the monopod onto the bottom coupling plate by threading it clockwise until it is tight.
- 3.10. Install the monopod base onto the bottom of the monopod by threading it clockwise until it is tight.

## CONTROLLED DOCUMENT REVISION HISTORY

Revision: A  
Revision Created: 01/31/2022  
Approved By: Patrick Powell  
Revision Details: Document Created

---

Revision: B  
Revision Created: XX/XX/XXXX  
Approved By: Patrick Powell  
Revision Details:

1. Changed...
- 

Revision: C  
Revision Created: XX/XX/XXXX  
Approved By: Patrick Powell  
Revision Details:

2. Changed...