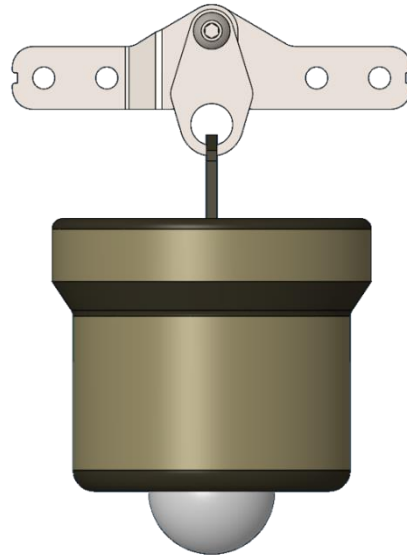


SIDELINER OVERHEAD LIGHT KIT INSTALLATION



1. SCOPE

- 1.1. To provide instruction for installing the SidelinER Light Kit.

2. REQUIRED COMPONENTS

- 2.1. SidelinER PRO or FLEX frame
- 2.2. Overhead Light Kit
- 2.3. 7/16" wrench
- 2.4. 1/8" Allen key

3. INSTALLATION

- 3.1. Setup your SidelinER frame.
- 3.2. Remove the center screw hardware from the center joint of the desired upper support.
 - 3.2.1. Gen 1 customers may need to remove two screws and a center spacer.
- 3.3. Use the supplied screw, nut and washer to replace the center screw and attach the light kit bracket.

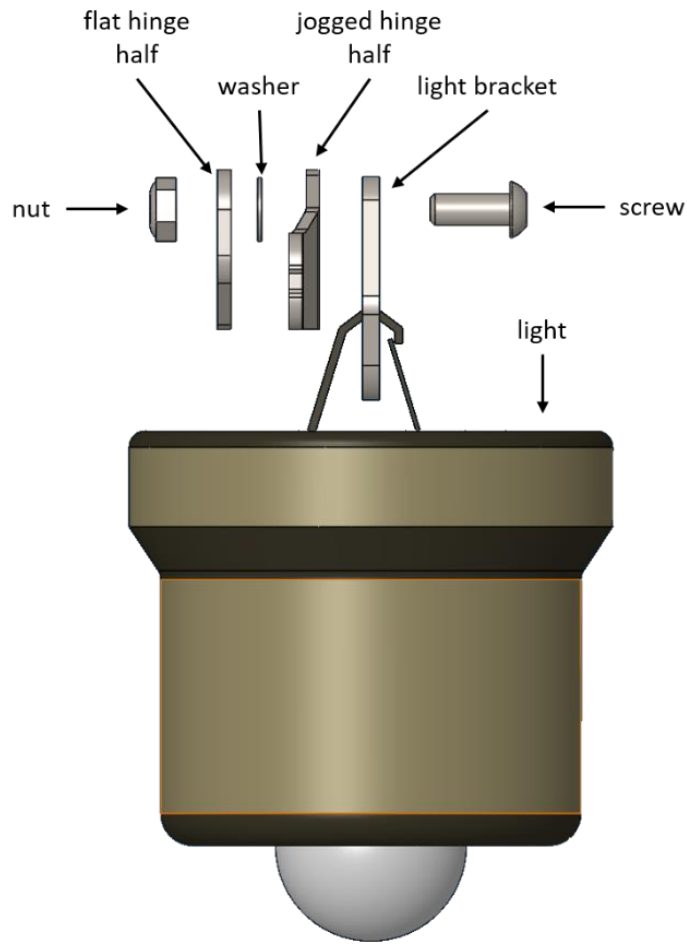


Figure 3.3 Light Kit Assembly

3.4. Repeat step 3.3 for all joints getting an overhead light kit.